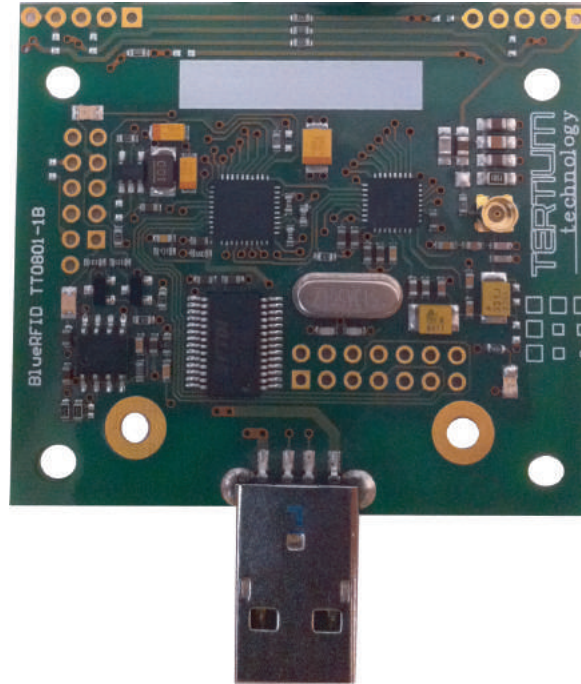


# BLUERFID HF



**RFID reader and writer**

**TTL serial or USB interfaces**

**Embedded antenna**

**3 LEDs + multitone beeper**

The BlueRFID HF electronic card is a desktop RFID reader, able to read and write HF tags and transmitting the acquired data to any device with a USB interface.

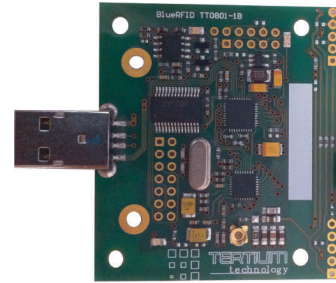
The use of BlueRFID HF is easy and intuitive thanks to the automatic activation of the HF tag scanning and the use of two LEDs and a multitone beeper to alert the operator of the reading.









BlueRFID HF is powered via the USB interface, the same interface used to communicate with the main desktop or portable devices equipped with the Windows, Linux or macOS operating systems. Data transmission takes place in virtual serial mode, a two-way channel. A simple serial communication protocol, available on all TERTIUM Technology products, allows the user to manage all the RFID reader functions. In particular, the ID scan and the reading/writing of the HF tag memory.

BlueRFID HF is equipped with an integrated RFID antenna. If requested by the customer, an external antenna connector and/or the TTL serial interface are available instead of the USB one.

TERTIUM

# BLUERFID HF



	<b>MAN/MACHINE INTERFACE</b>	3 LED for device operation signaling (*), Multitone Beeper
	<b>INTERNAL DEVICES</b>	Frequency: 13,56 MHz Power: 100 or 200 mW switchable Standard: ISO 15693, ISO 14443-A (only ID reading) Read range: up to 10 cm <b>Embedded Antenna</b>
	<b>INTERFACES</b>	Two-wire (TX and RX) asynchronous TTL serial or USB type A male
	<b>OS COMPATIBILITY</b>	Windows, macOS, Linux
	<b>POWER SUPPLY</b>	USB powered, 220mA peak @ 5Vdc (RF active full power), 35mA @ 5Vdc (idle mode)
	<b>WORKING TEMPERATURE</b>	-20°C / 70°C
	<b>DIMENSIONS</b> (USB connector not included)	Height 5 cm - Width 5 cm
	<b>WEIGHT</b>	20 g

(\*): one LED alternative at opendrain