

“

The complex use of microcontrolled equipment (i.e. software-dependent electronic devices) in the digital era often makes modern technology unapproachable for some people or insufficiently exploited for others.

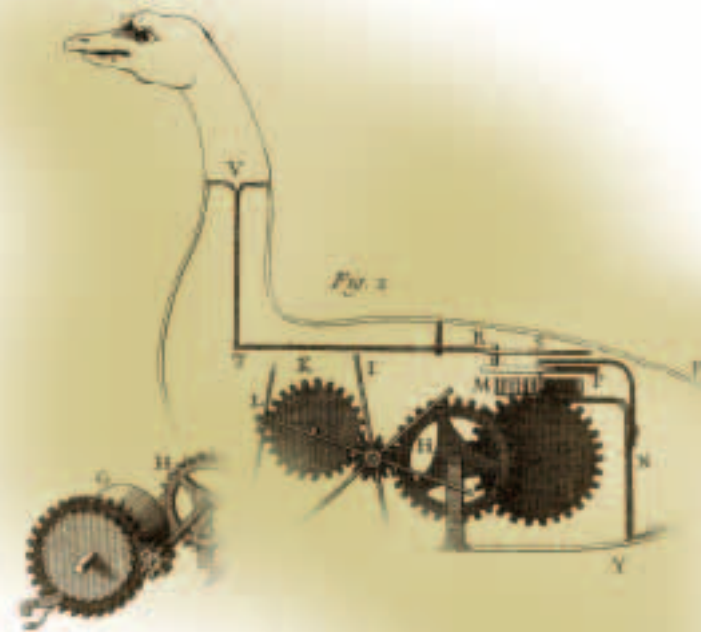
The mission of TERTIUM Technology is the developing of electronic equipment and technologically advanced application software intuitive in use, with the objective to approach the modern technology to the man in the most natural way.

Starting from the first phases of product specification TERTIUM is engaged in planning man/machine interaction with the purpose to make easy and immediate the use of electronic equipment, proper for the demands of the end user. The purpose is to minimize the learning effort (or cognitive impact) of the operation, making possible for the user to interact with the machine according to his/her knowledge and habits.

”



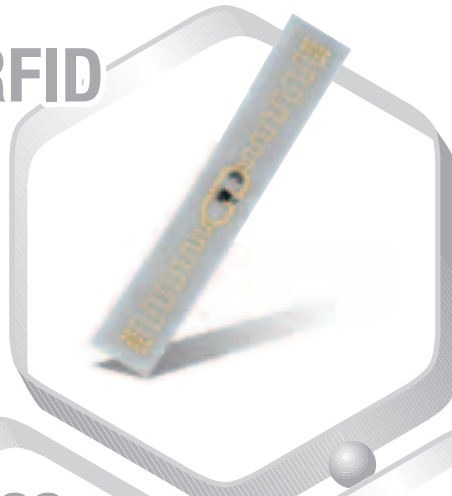
TERTIUM Technology S.r.l.
Via G.B. Picotti, 8
56124 Pisa - Italy
Tel. +39 050 576777
www.tertiumtechnology.com



TERTIUM
FOR
NATURE

RFID

The RFID technology allows the identification of objects, animals or people by using modulated radio waves with a single code able to identify univocally the transponder holder.



Touchless

The Touchless technology makes touch-sensitive any surface of non-conductive material: glass, shielded glass, plastics, leather, wood, marble, ceramics, cloth, etc.



Zero Power Wireless

The ZPW or RFID&Sensing technology is an extension of the RFID standard technology. As well as for data identification and memorization, this is used to acquire data from physical or chemical sensors connected to the transponders.



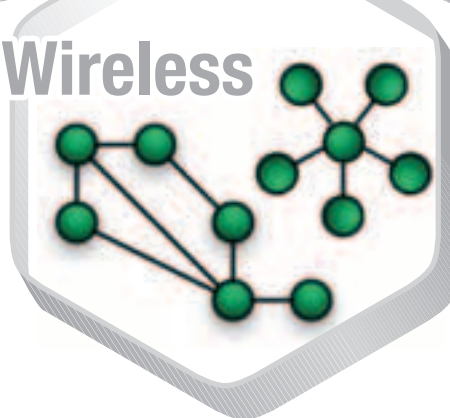
Embedded Connectivity

The Embedded Connectivity technology provides direct interconnection of the embedded systems to local or geographical computer network. Ethernet, Wi-Fi, GSM/GPRS/GPS are the mainly used interfaces.



Ultra Low Power Wireless

The ULPW technology allows data communication via radio between two or more electronic devices. It is characterised by minimal quantity of exchanged data, very low power consumption by the radio and often by the entire electronic device.



System On Chip ARM Inside

The SoC ARM Inside technology allows the realization of embedded systems with high performance but with minimized power consumption and thermal dissipation.

